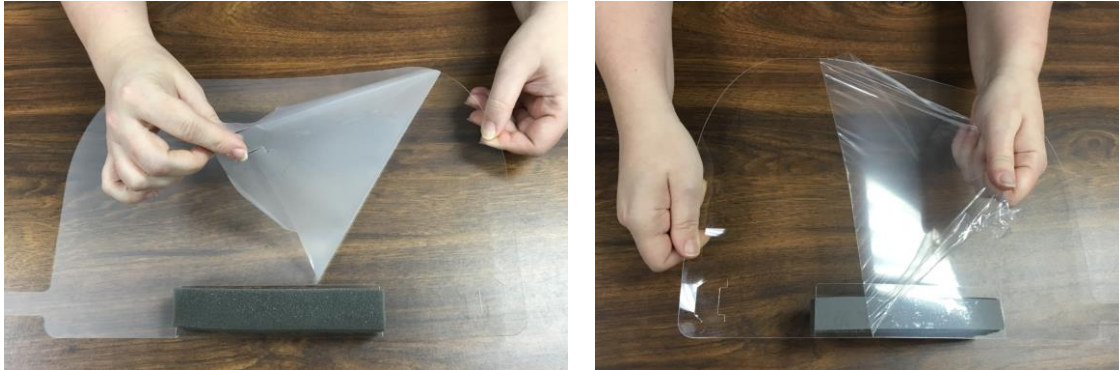




PROTECTIVE FACE SHIELD

USE INSTRUCTIONS

1. Remove the protective film from both sides of the lens shield.



2. For head sizing, insert the locking strip through the two slots in the opposite top corner of the shield lens. Insert down through the first slot, and up through the second.



3. Test fit, and pull strap to the next lock tail until the desired snug fit is achieved.

